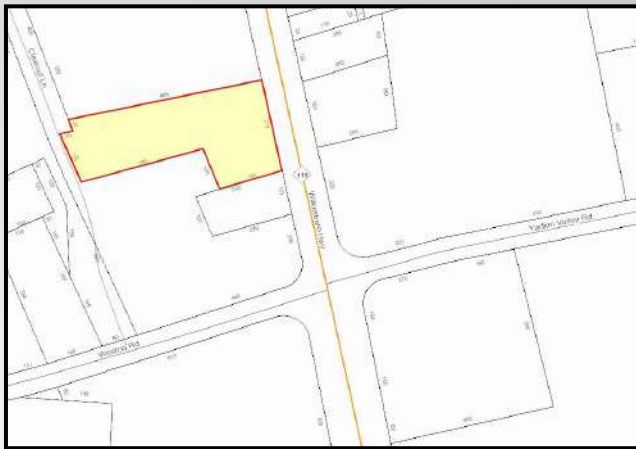


2997 Wilkesboro Hwy

Statesville, NC 28625

EquityCP.com



For more information or to schedule a tour, please contact:

**Eric Thompson**

Broker

704-902-2757 Cell

ethompson@equitycp.com

## FOR SALE \$475,000

Zoned NB

Approximately 10,980 SF building 6 miles north of Exit 150 in Statesville. Easy access to I-40 and I-77 with frontage on Hwy. 115. Building has 7 bay doors, offices, conference room, kitchen, restrooms, and storage areas. Property is  $\pm$  2 acres, with parking area and concrete/asphalt drive wrapping around the building.



**Equity Commercial Properties**

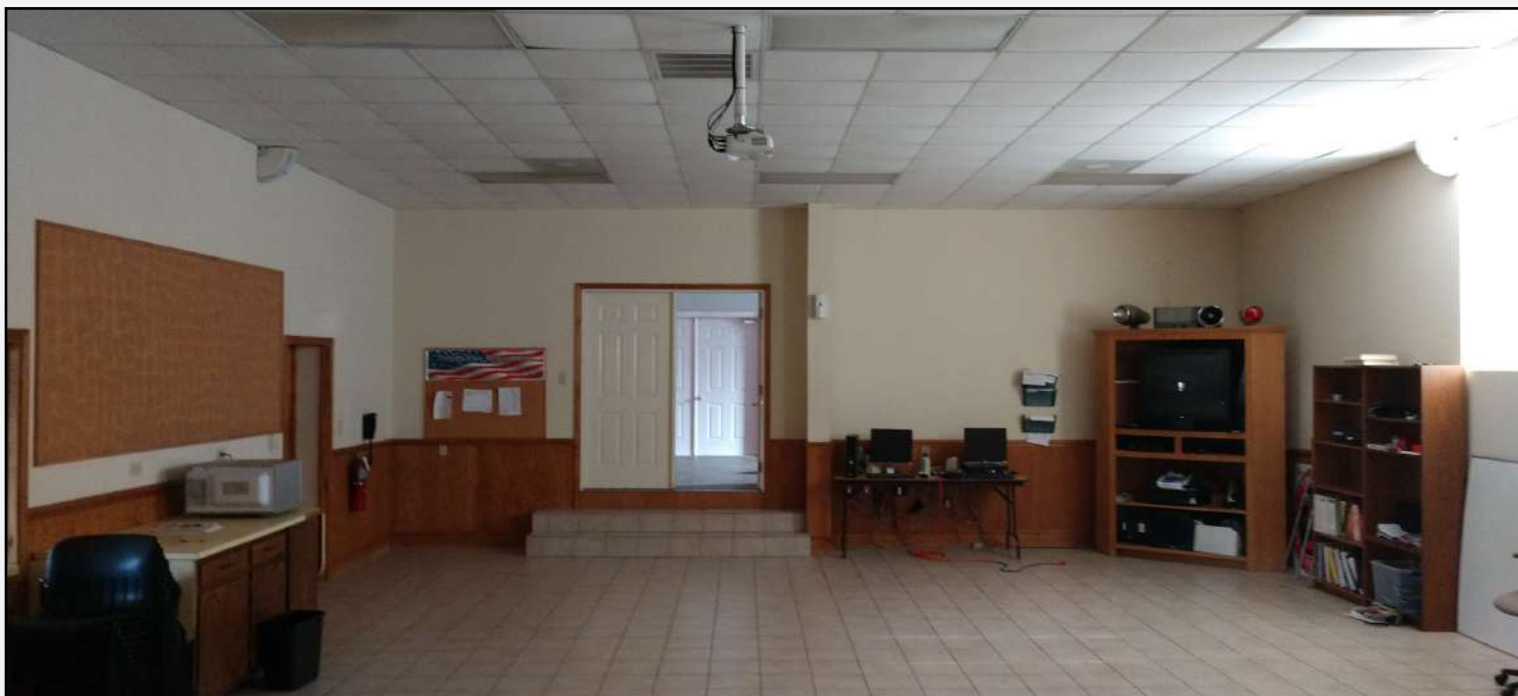
114 Morlake Dr.  
Suite 104  
Mooresville, NC

Office 704-799-9202  
EquityCP.com

2997 Wilkesboro Hwy

Statesville, NC 28625

EquityCP.com



Equity Commercial Properties

114 Morlake Dr.  
Suite 104  
 Mooresville, NC

Office 704-799-9202  
EquityCP.com



2997 Wilkesboro Hwy

Statesville, NC 28625

EquityCP.com



**Equity Commercial Properties**

114 Morlake Dr.  
Suite 104  
 Mooresville, NC

Office 704-799-9202  
EquityCP.com

2997 Wilkesboro Hwy

Statesville, NC 28625

EquityCP.com



**Equity Commercial Properties**

114 Morlake Dr.  
Suite 104  
Mooresville, NC

Office 704-799-9202  
EquityCP.com



# 2997 Wilkesboro Hwy

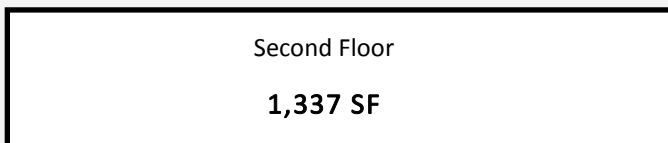
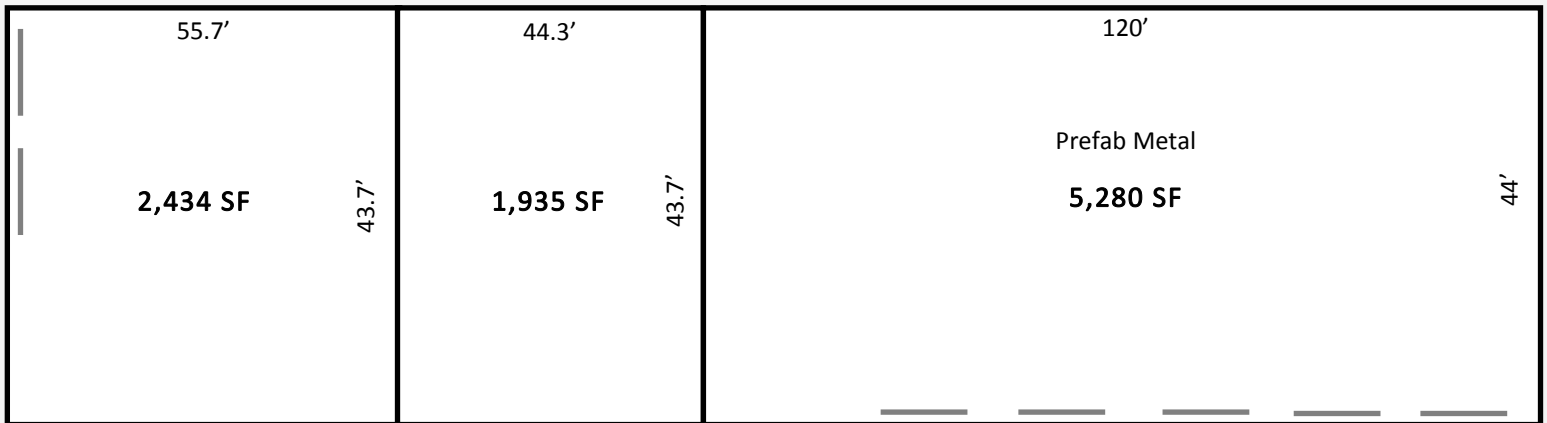
Statesville, NC 28625

EquityCP.com



## Property Details

Status: Available For Sale  
Price: \$475,000  
Zoning: Neighborhood Business  
Square Footage: +/- 10,980  
Lot size: +/- 2 Acres  
Parcel ID #: 4727-56-0709



**+/- 10,980 SF**