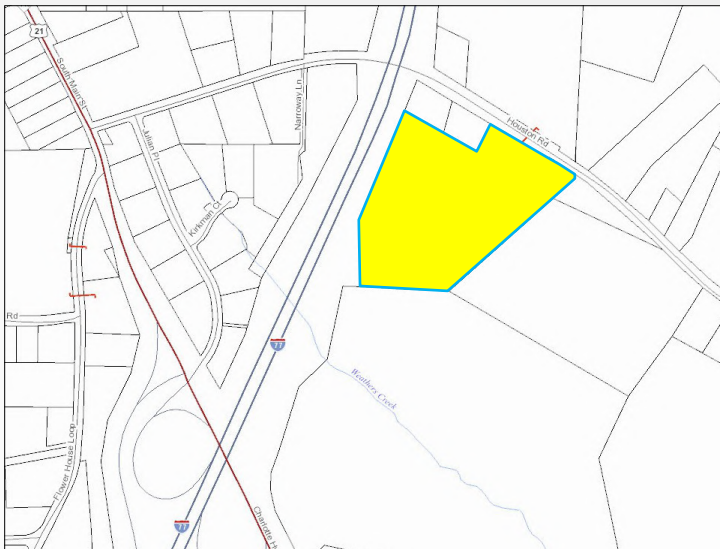


Houston Rd +/- 20 Acres

Troutman, NC 28166

EquityCP.com



For Sale
\$79,900 / Acre
+/- 20 Acres

Approximately 20 Acres zoned HB at Exit 42 in Troutman. Located next to Lowes Planogram. Property is less than 1 mile from I-77 with over 550' of road frontage on Houston Rd. Open pasture with great visibility from I-77. Property has two billboards located along interstate. Potential for multiple uses at a growing exit on I-77.

John Kindley

Broker

704-677-3048

jkindley@equitycp.com

Eric Thompson

Broker

704-902-2757

ethompson@equitycp.com



Equity Commercial Properties

114 Morlake Dr.

Suite 104

Mooreville, NC

Office 704-799-9202

EquityCP.com

Houston Rd +/- 20 Acres

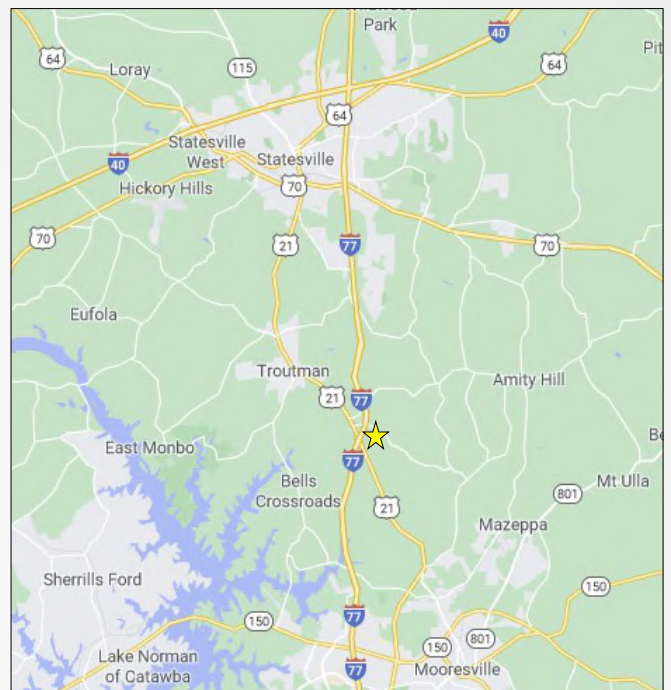
Troutman, NC 28166

EquityCP.com



Property Details

| | |
|--------------------|------------------|
| Price: | \$79,900/ Acre |
| Zoning: | Highway Business |
| Proximity to I-77: | > 1 mile |
| Lot size: | +/- 20 acres |
| Road Frontage: | +/- 550' |
| Parcel Number: | 4750-08-4420 |
| Topography: | Level/Sloping |



Equity Commercial Properties

114 Morlake Dr.
Suite 104
Mooresville, NC

Office 704-799-9202
EquityCP.com