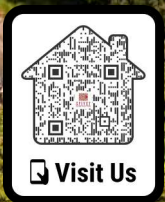
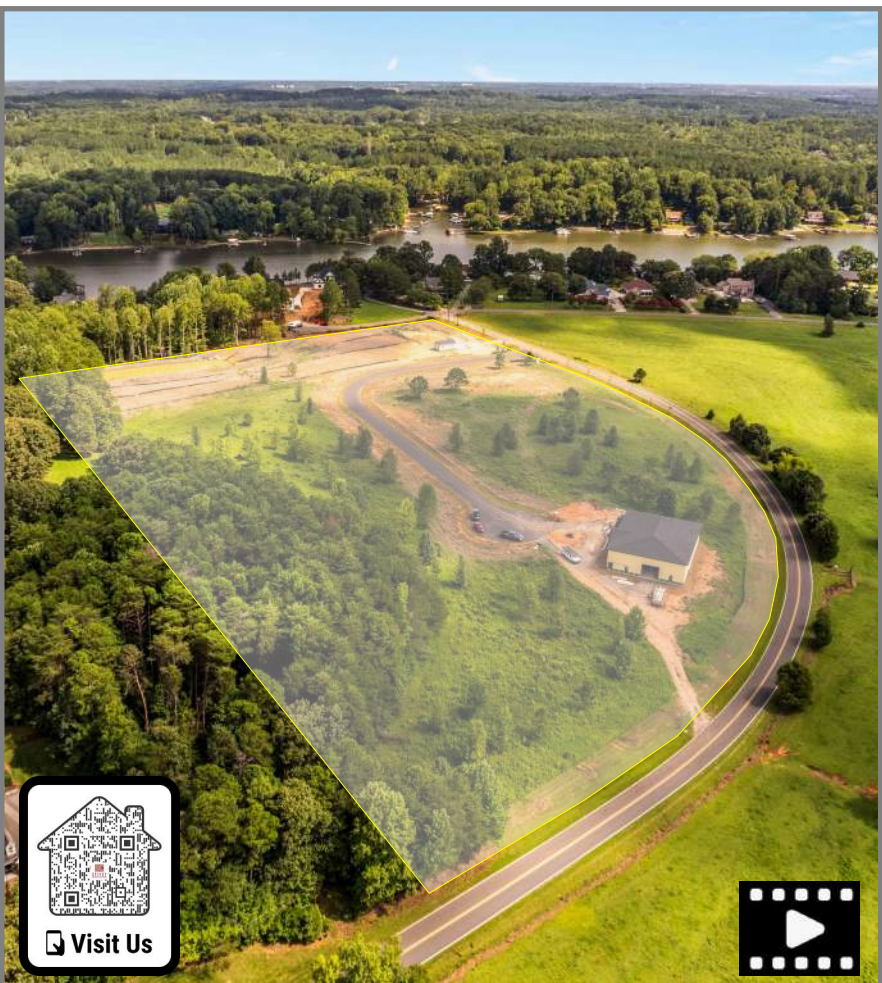


HONEYCUTT FLATS



Honeycutt Flats

Introducing a Unique Living Experience in the Troutman & Mooresville area. Honeycutt Flats has 15 Lots now available for purchase! This Luxury Barndominium Style Community brings an exciting concept to the Perth Road Lake Norman area. Custom built homes by Spivey Construction Co. Inc, combines the flexibility of Luxury Living and Large Premium Garage areas to accommodate motorhomes, boats, cars, ATV's & hobby shops.

Willis I. Spivey	Lewis D. Spivey
Spivey Construction Co., Inc.	Equity Commercial Properties
50 Years 1975 - 2025	Realtor/Broker
704-363-7288	704-363-1401
Willis@SpiveyInc.com	Lspivey@Equitycp.com



HONEYCUTT FLATS

LUXURY BARNDOMINIUM LIVING

Lake Norman State Park - 2 Miles



Town of Troutman - 4 Miles



Honeycutt Flats



I-77 Exit 42 - 6 Miles



The Village at Byers Creek - 8 Miles



HONEYCUTT FLATS

LUXURY BARNDOMINIUM LIVING

Exterior Photos



HONEYCUTT FLATS

LUXURY BARNDOMINIUM LIVING

Interior Photos



HONEYCUTT FLATS

LUXURY BARNDOMINIUM LIVING

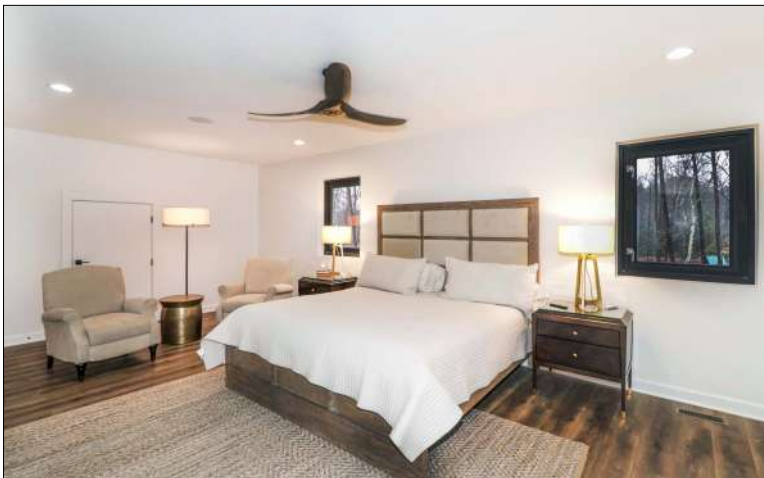
Interior Photos



HONEYCUTT FLATS

LUXURY BARNDOMINIUM LIVING

Interior Photos

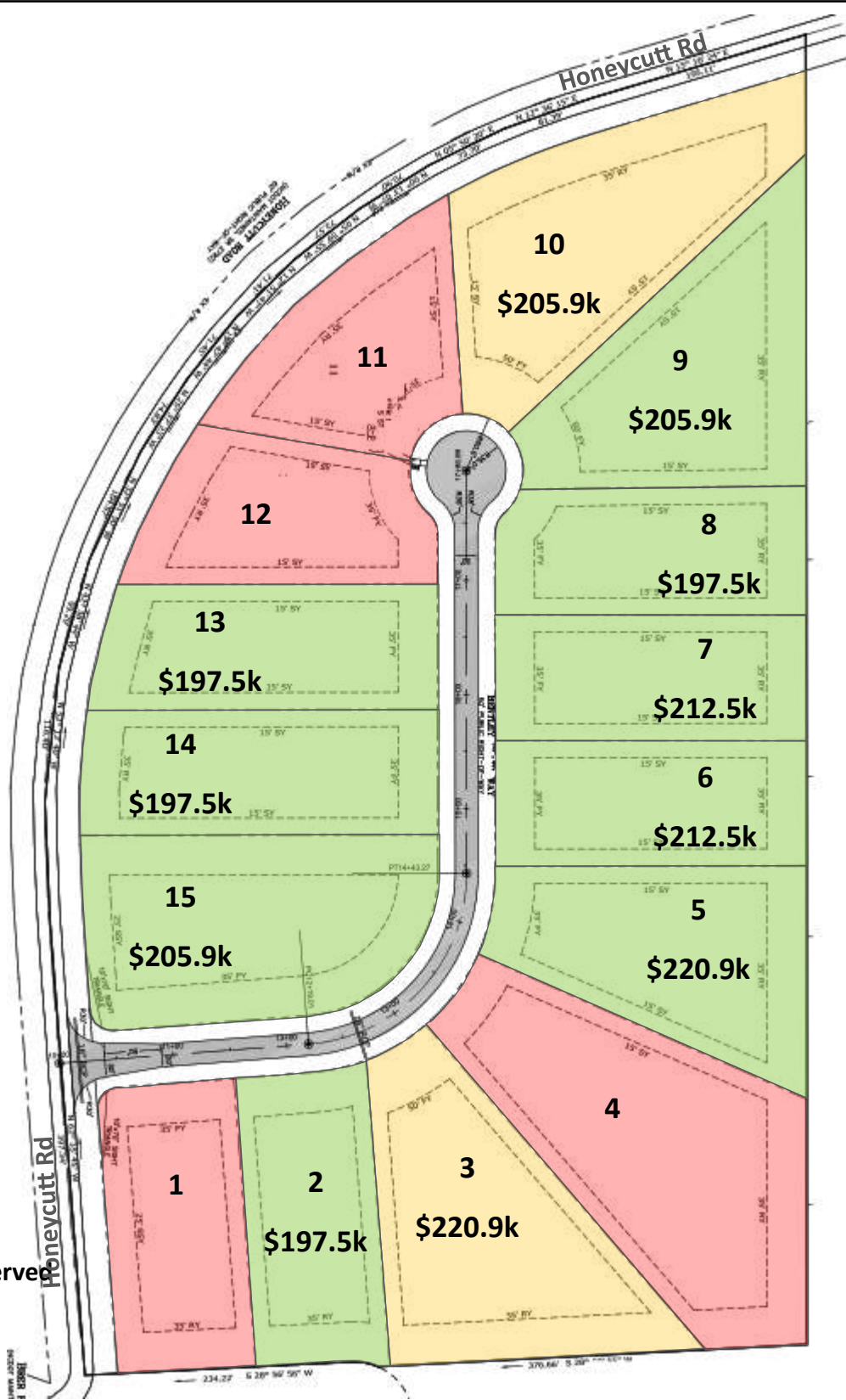


HONEYCUTT FLATS

LUXURY BARNDOMINIUM LIVING

Site Plan & Lot Information—Please Call or Email to Confirm Lot Status

Lot #	Acres
1	0.70
2	0.69
3	1.11
4	1.39
5	0.91
6	0.69
7	0.69
8	0.69
9	0.98
10	1.18
11	0.69
12	0.69
13	0.74
14	0.79
15	1.08

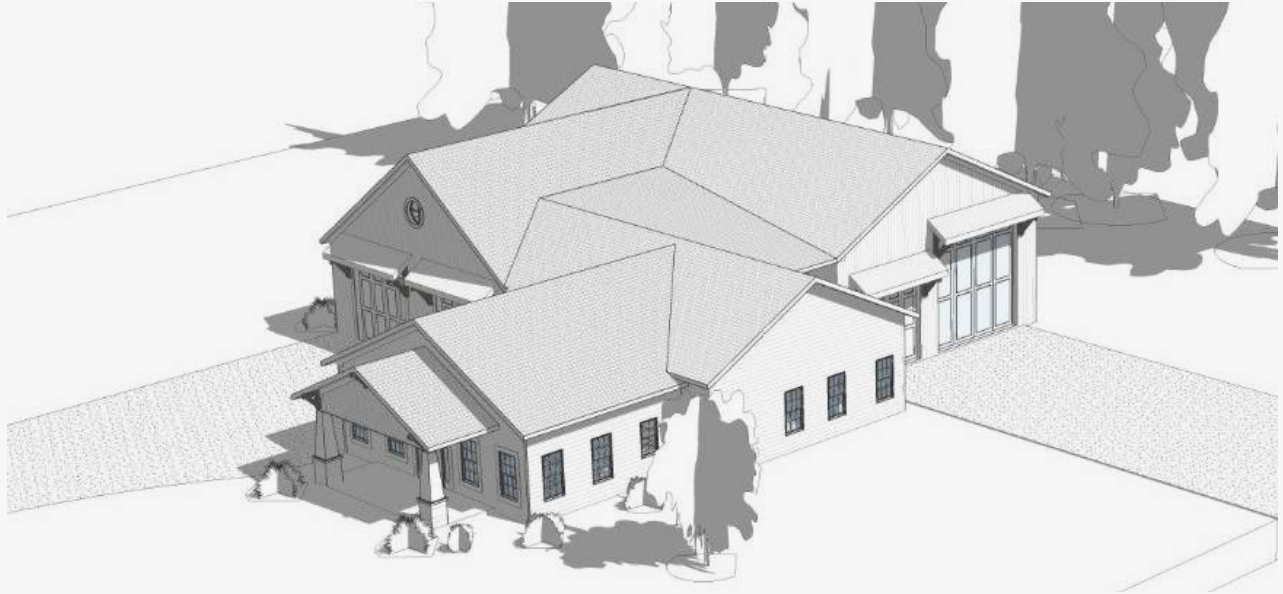


- Available
- Pending/Reserve
- Sold

HONEYCUTT FLATS

LUXURY BARNDOMINIUM LIVING

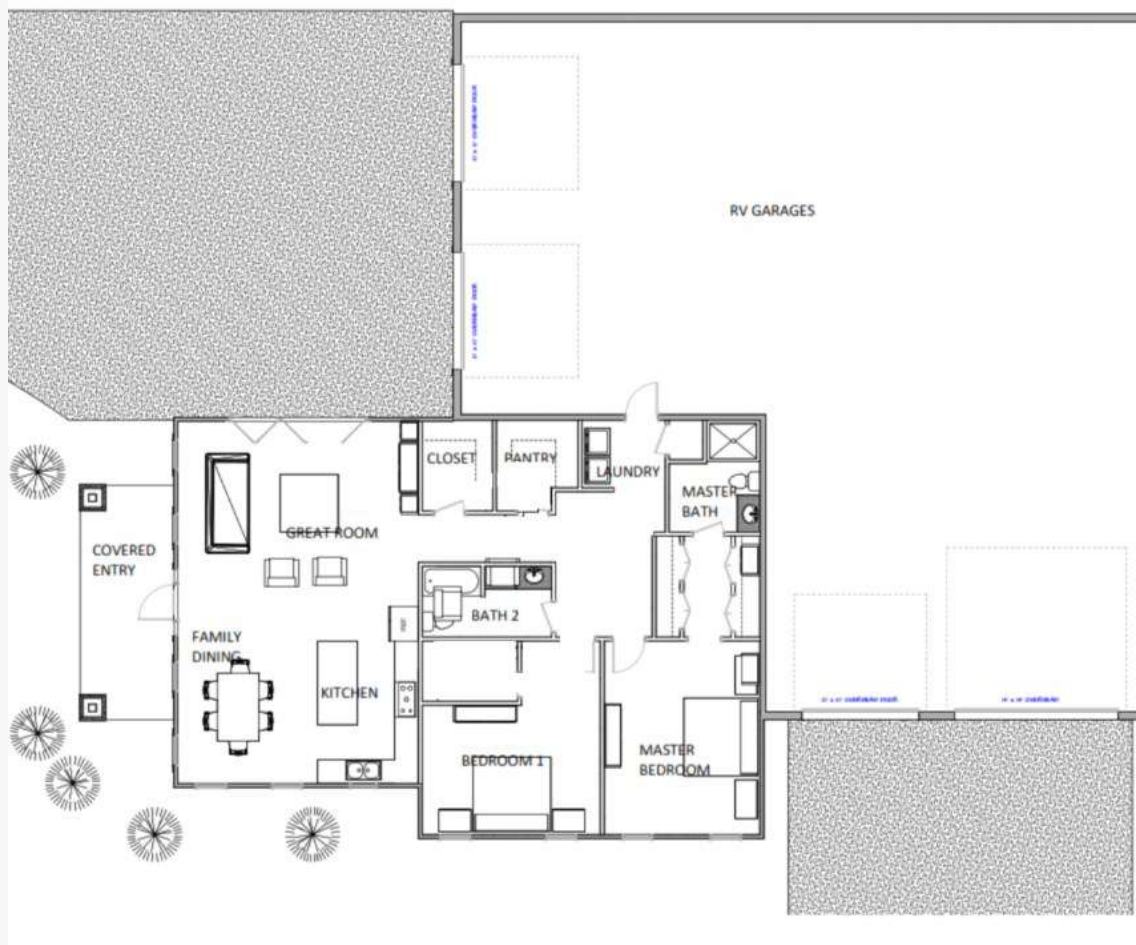
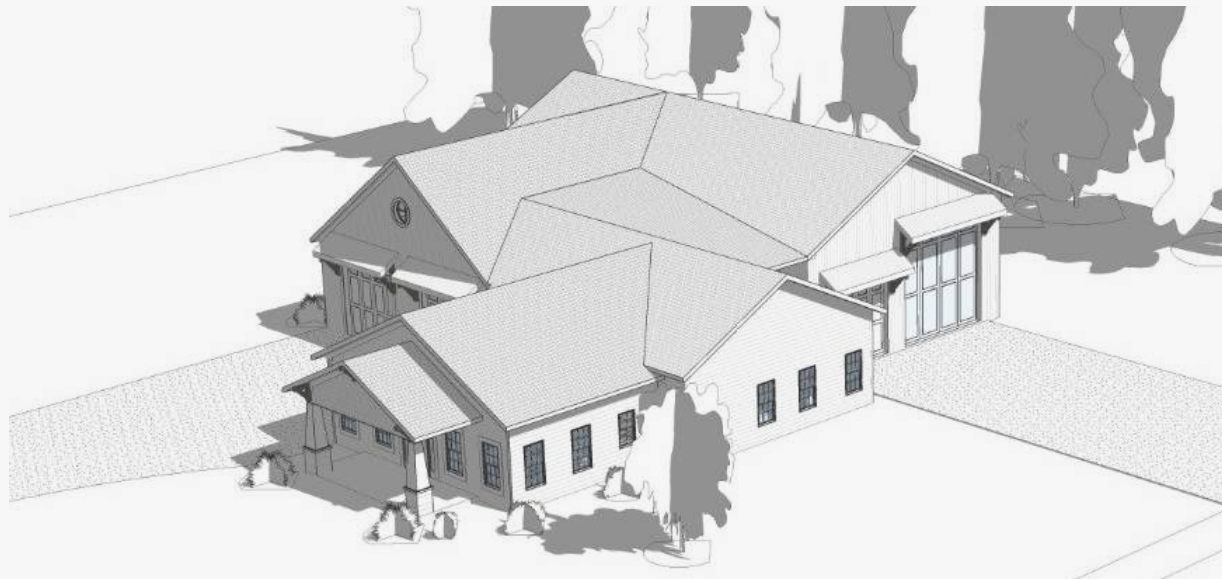
Customizable Building Examples



HONEYCUTT FLATS

LUXURY BARNDOMINIUM LIVING

Building & Floor Plan Example



HONEYCUTT FLATS

LUXURY BARNDOMINIUM LIVING

Building & Floor Plan Example

