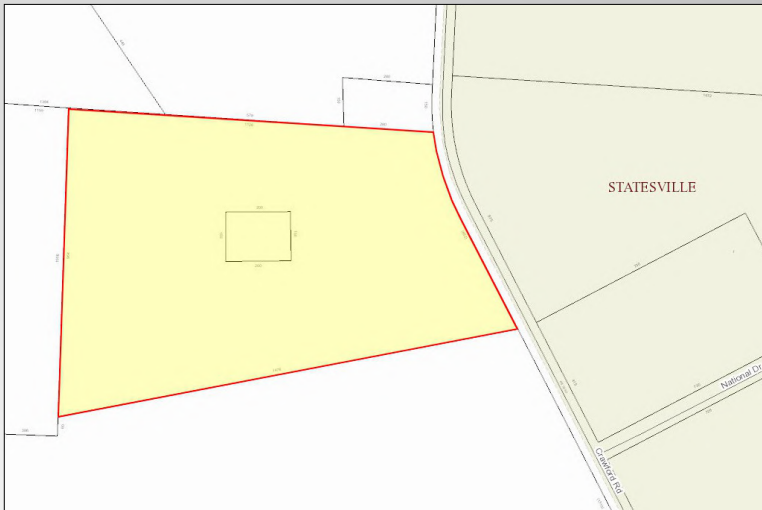


Crawford Road Business Park

Statesville, NC 28625

EquityCP.com



FOR SALE

\$42,500 PER ACRE

± 22.65 Acres

Approximately 22.65 Acres on Crawford Rd. in Statesville. Less than 2 miles from exit 154 on I-40, one exit from the I-77 junction. Over 660' of road frontage on Crawford Rd. Flat topo with minimum site work required. Great location in Crawford Business Park with major I-40/ I-77 road improvements currently taking place.

For more information or to schedule a tour, please contact:

John Kindley

Broker

704-677-3048 Cell

jkindley@equitycp.com

Eric Thompson

Broker

704-902-2757 Cell

ethompson@equitycp.com



Equity Commercial Properties

114 Morlake Dr.
Suite 104
Mooresville, NC

Office 704-799-9202
EquityCP.com

Crawford Road Business Park

Statesville, NC 28625

EquityCP.com



Property Details

Price: \$42,500 per acre

Acres: +/- 22.65

Road Frontage: +/- 660'

Lot Depth: +/- 1,100'

Topography: Level

Proposed Use: Industrial

Proximity to I-40/I-77: 2 miles

John Kindley

Broker

704-677-3048 Cell

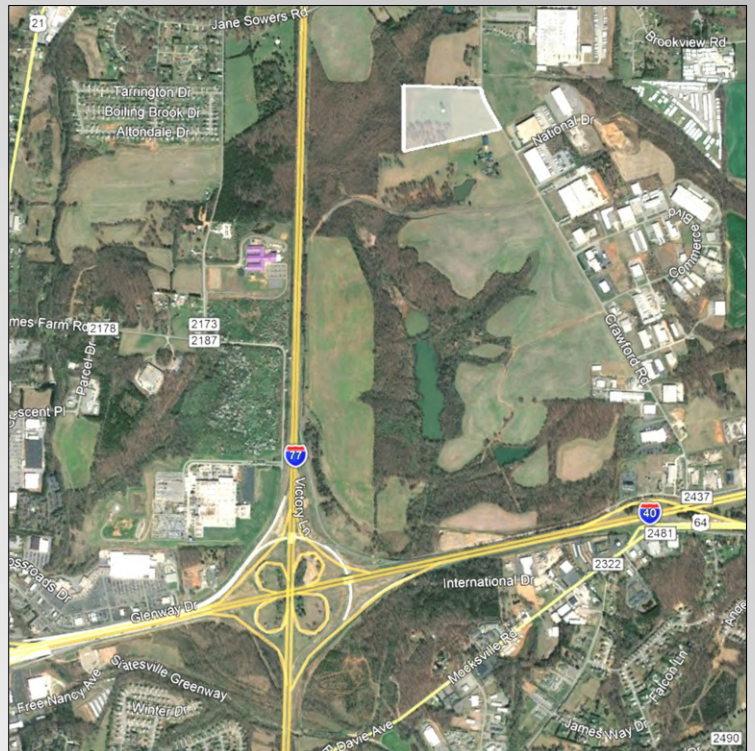
jkindley@equitycp.com

Eric Thompson

Broker

704-902-2757 Cell

ethompson@equitycp.com



Equity Commercial Properties

114 Morlake Dr.
Suite 104
Mooresville, NC

Office 704-799-9202

EquityCP.com